



SPIK[®] 3000A

Superior Plasma Instant Kinetics



HiPIMS | Mid Frequency | Bias





SPIK3000A Feature

- FPPG (Free Pulse Pattern Generator)
- Symmetric voltage output
- Fast arc detection and suppression less than 2 μ s
- Remote interface: RS 485 / Profibus
- 1 x Trigger input
- 2 x Trigger output
- Fast interface for stack and synch. applications
- Bursts Function for reactive sputtering
- Ext. Pulse Trigger for custom pulse input

Applications

- HiPIMS
- HiPIMS + MF
- HiPIMS + Bias
- HiPIMS Stack (up to 2000A peak)
- MF up to 75 kHz
- DC Pulse (Unipolar or Bipolar)
- Pulsed Bias

Type

- A-10 = (10 kW DC Input)
- A-20 = (20 kW DC Input)
- A-30 = (30 kW DC Input)

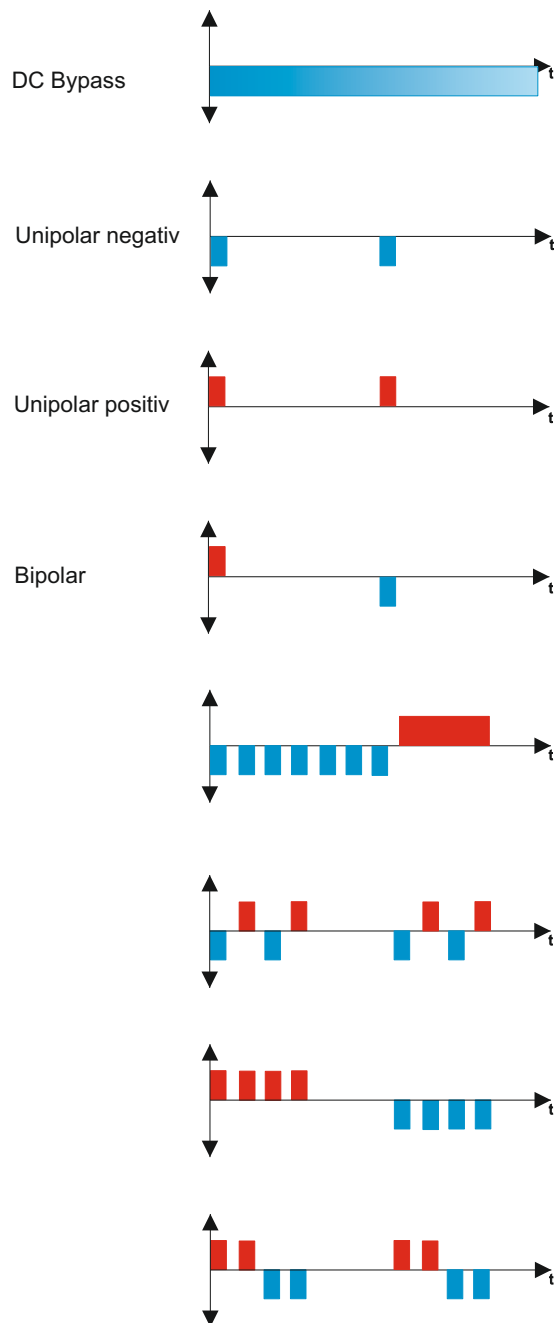
Max. DC pulsed power (kW)

- 1000 kW (peak)

Pulse

- 20Hz – 75kHz pulse frequency range @ UP Mode
- 40Hz – 40kHz pulse frequency range @ BP Mode
- Pulse on-time 5 μ s – 16ms
- Pulse off-time 5 μ s – 32ms
- DC negative mode (DC Bypass)
- Unipolar positive
- Unipolar negative
- Bipolar
- FPPG (up to 8 pulses programmable)
- Symmetric output voltage

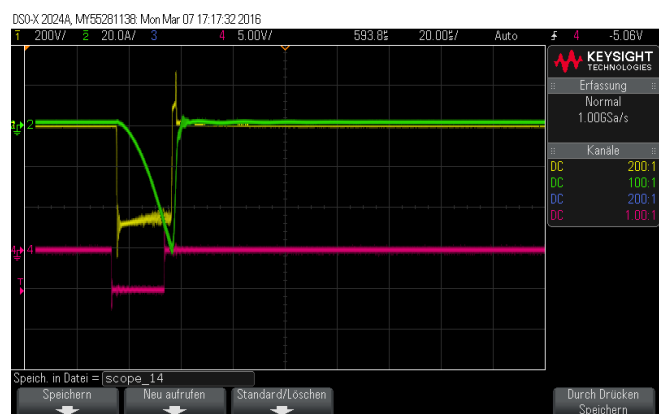
Output Voltage Examples





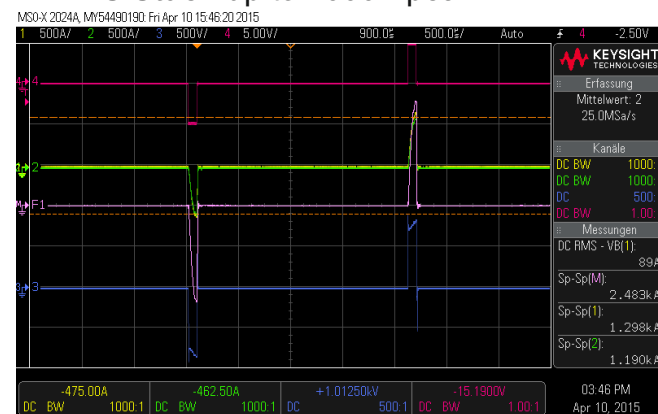
SPIK3000A Pulse Output Examples

HiPIMS



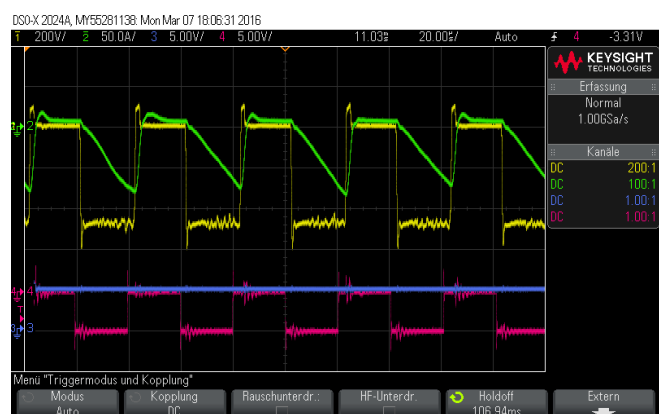
SPIK3000A / Unipolar / Single Magnetron

HiPIMS Stack up to 2000A peak



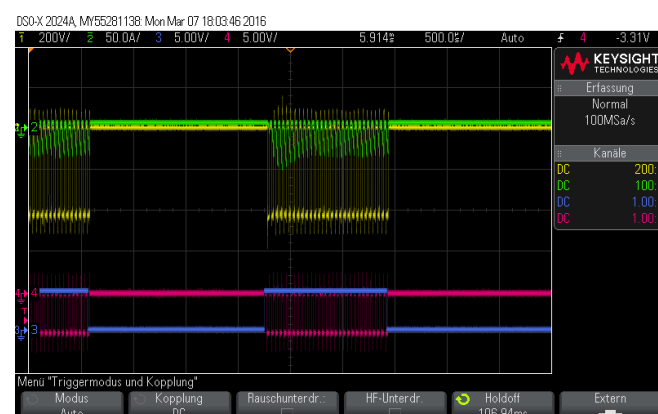
Two SPIK3000A in parallel / Dual Magnetron

MF



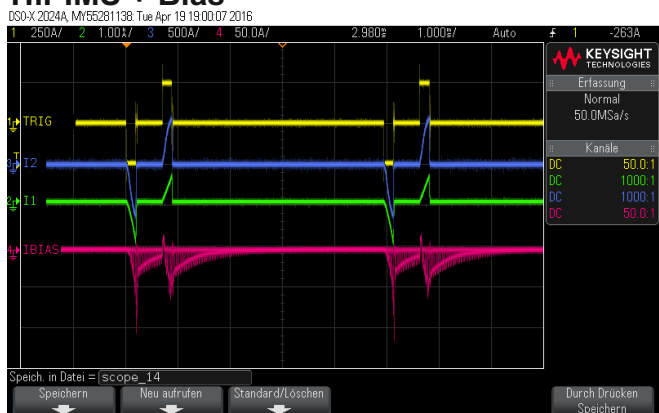
SPIK3000A / Unipolar / Single Magnetron

MF Burst Function

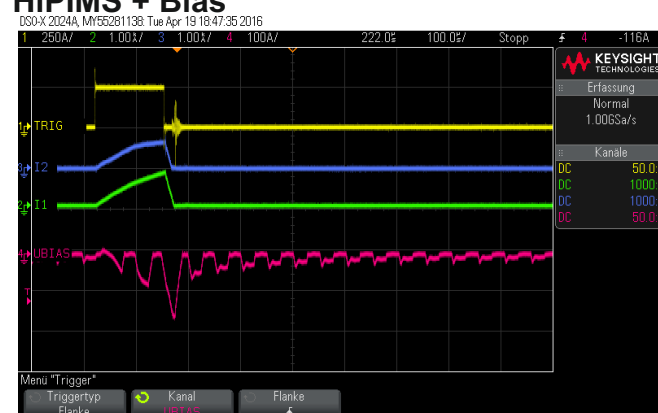


SPIK3000A / Unipolar / Single Magnetron

HiPIMS + Bias

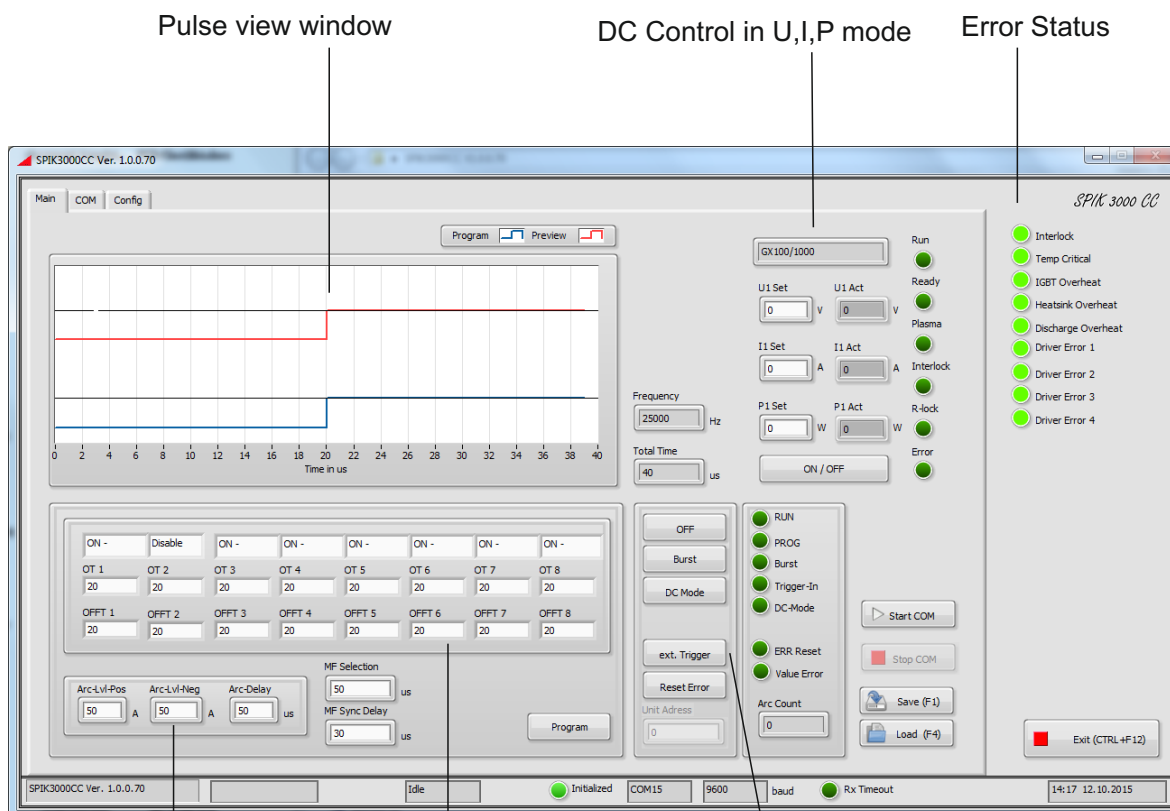


HiPIMS + Bias





SPIK3000 CC Software (only for RS 485 available)



8 x pulse text fields to program
polarity on & off time in µs

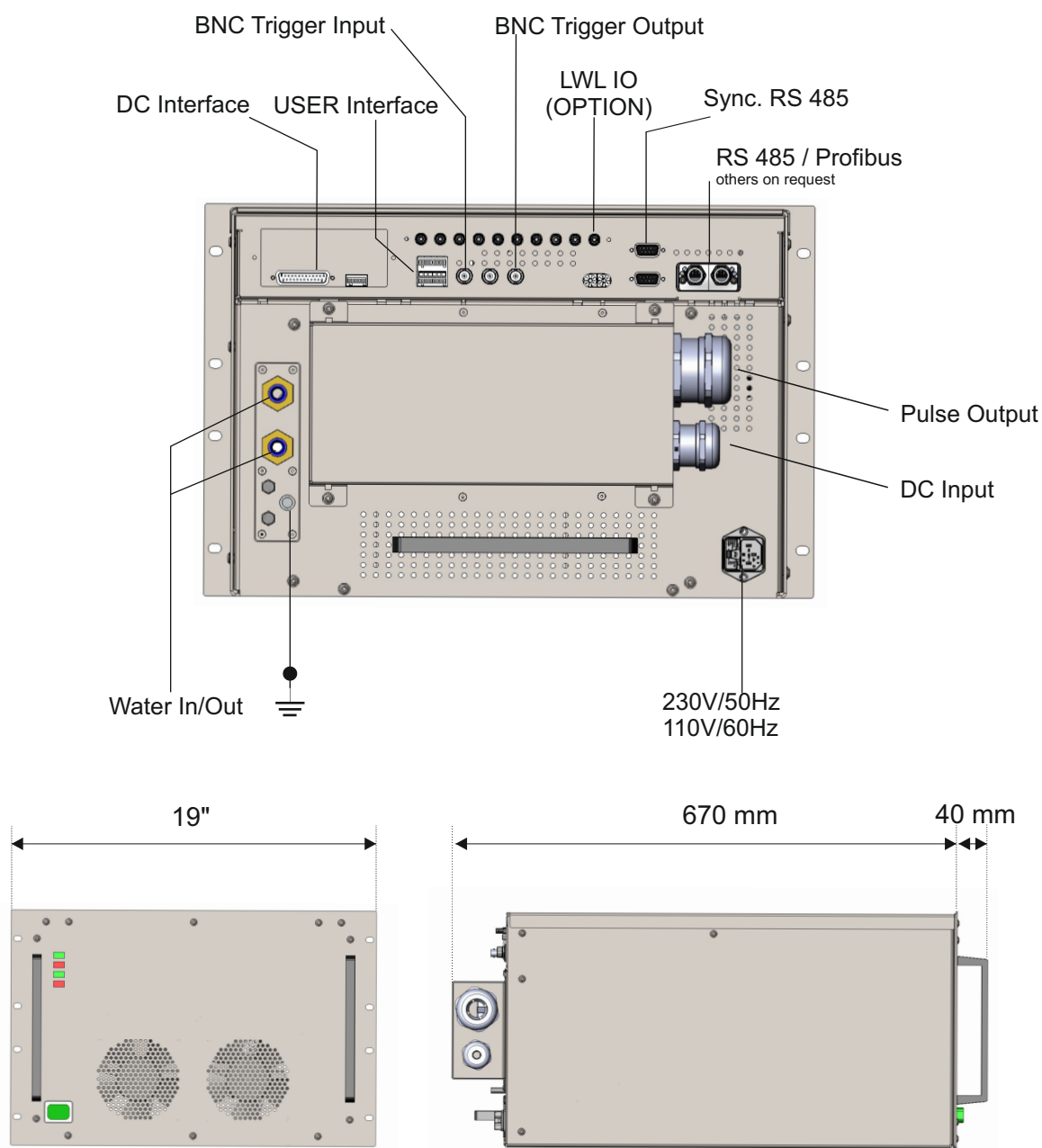
Arc-Current-Level:
positive, negative and delay adjustable

Mode control and status view





Interfaces and Mechanical Dimension





For more information and applications
please visit: www.melec.de

Contact:

Michael Mark, CEO
Tel. +49 (0) 7223 28 14 5 -20
michael.mark@melec.de

Günter Mark, authorized officer
Tel. +49 (0) 7223 28 14 5 -10
guenter.mark@melec.de

Certified Quality Management
ISO9001

Representative



Copyright © 2016 MELEC GmbH

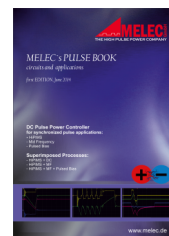
All rights reserved" Jan.2016

The contents of this brochure are the copyright of the publisher and may not be reproduced (even extracts) unless permission is granted. Every care has been taken to ensure the accuracy of the information contained in this data sheet / brochure, but no liability will be accepted for any errors or omissions. The right to make design modifications is reserved.

Downloads & Links



MELEC PULSE BOOK



- **MELEC GmbH PATENTS**
- USA
- Germany
- China
- Taiwan
- Japan



www.melec.de

For more information
and applications

